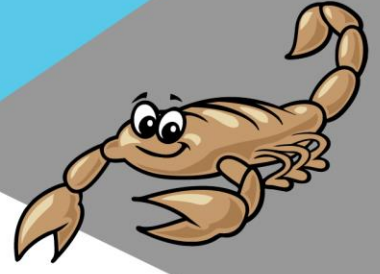


ANASAZI



Thank you for your interest in Anasazi Elementary School for the 2022-2023 school year!

Please follow the enrollment steps for kindergarten – 5th grade below. (Your child must turn 5 by Sept. 1, 2022 to enroll in Kindergarten)

Step 1: Do you need to apply for Open Enrollment?

If your Arizona address resides **outside** our attendance boundaries, please apply for open enrollment by **clicking [here](#)**. Please make sure the year 2022-2023 is selected.

If you reside **within** our boundaries/we are your homeschool, please **proceed to Step 2**.

If you are not sure if you reside within our attendance boundaries, please use this [link](#) to find your homeschool.

If you need to apply for open enrollment, please note that you will have to wait for acceptance (via email) prior to proceeding with the next steps. If accepted, parents will have 10 days to complete Steps 2 & 3 Any applications received will be reviewed on a first come first serve basis.

Step 2: Regular Online Registration

If your address resides within Anasazi's attendance boundaries, please [click here](#) to fill out the online registration paperwork.

a. Please login using your ParentVue account login and password.

b. If you **do not** have a ParentVue account, please click the "**More Options**" tab and then **Create a New Account**

c. Please be sure to select the 2022-2023 New/Transferring/Reenrolling Student Enrollment

d. Please upload the supporting documents in the document section of online registration, or you may email them to Michelle Smith at michellesmith@susd.org. If you email them, please make sure to send it in its original size for printing and legibility purposes.

The supporting documents needed are:

- **A certified copy of the pupil's birth certificate**
- **Immunization records**
- **Current Proof of Residency** (Valid Arizona driver's license, Valid Arizona motor vehicle registration, Mortgage deed, payroll stub, Bank or credit card statement, Rental agreement, or lease (signed copy), Utility bill (water, electric, gas, cable, phone)
- **Parent Photo ID**
- **Guardianship/Custody documentation** (if applicable)

Step 3: Review and Submit

Please be sure to check after completing each section of your child's online registration and submitting it, there should be green checkmarks next to all the sections listed including Review/Submit.

Step 4: Follow-up

Once your child's enrollment has been processed, you should receive an automated email confirmation. Please email Michelle Smith michellesmith@susd.org when you have completed everything and attach any documents you were unable to upload online. She will check our database and continue processing your child's enrollment. To check the status of your child's enrollment, please log back into ParentVUE.

We look forward to having you join the Anasazi family!