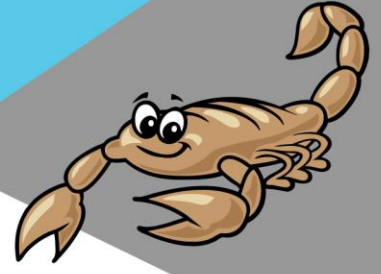


ANASAZI



Thank you for your interest in Anasazi Elementary School for the 2022-2023 school year!

Please follow the enrollment steps for kindergarten – 5th grade below. (Your child must turn 5 by Sept. 1, 2022 to enroll in Kindergarten)
If you are interested in enrolling your child in the PreK program, please visit the [SUSD Community Education Website](#) for enrollment information.

Step 1: Do you need to apply for Open Enrollment?

If your address resides **outside** our attendance boundaries, please apply for open enrollment by **clicking [here](#)**. Please make sure the year 2022-2023 is selected.

If you reside **within** our boundaries/we are your homeschool, please **proceed to Step 2**.

If you are not sure if you reside within our attendance boundaries, please use this [link](#) to find your homeschool.

If you need to apply for open enrollment, please note that you will have to wait for acceptance (via email) prior to proceeding with the next steps. If accepted, parents will have 10 days to complete Steps 2 & 3 *Open enrollment applications receive between Nov. 1st – Dec. 31st will be reviewed, and parents will be notified of acceptance/waitlist on or after December 1, 2021. Any applications received after the priority period will be reviewed on a first come first serve basis.*

Step 2: Regular Online Registration (**opens December 1st**)

If your address resides within Anasazi's attendance boundaries, please [click here](#) to fill out the online registration paperwork.

a. Please login using your ParentVue account login and password.

b. If you **do not** have a ParentVue account, please click the "**More Options**" tab and then **Create a New Account**

c. Please be sure to select the 2022-2023 New/Transferring/Reenrolling Student Enrollment

d. Since our school campus is not currently open to bring in your supporting documentation, the district is allowing us to accept the uploaded items in the document section of online registration or you may email them to Elise Hepner at ehepner@susd.org.

The supporting documents needed are:

- **A certified copy of the pupil's birth certificate**
- **Immunization records**
- **Current Proof of Residency** (Valid Arizona driver's license, Valid Arizona motor vehicle registration, Mortgage deed, payroll stub, Bank or credit card statement, Rental agreement, or lease (signed copy), Utility bill (water, electric, gas, cable, phone)
- **Parent Photo ID**
- **Guardianship/Custody documentation** (if applicable)
- **Health History Form** (will be sent in follow up email after completion of Online Registration)

Step 3: Review and Submit

Please be sure to check after completing each section of your child's online registration and submitting it, there should be green checkmarks next to all the sections listed including Review/Submit.

Step 4: Follow-up

Please email Elise Hepner Ehepner@susd.org when you have completed everything and attach any documents you were unable to upload online. She will check our database and continue processing your child's enrollment. Once enrolled, you will receive an automated email from our database confirming enrollment for the 2022-2023 school year.

We look forward to having you join the Anasazi family!

ANASAZI ELEMENTARY SCHOOL

12121 N. 124th Street, Scottsdale, Arizona 85259 | (480) 484-7300

susd.org/anasazi