



**Shirts** must be solid in color & collared w/ no logos, graphics or writing. They may be white, black, light blue or navy. They may be long, short or mid-sleeved. No garments without sleeves or a w/ a hood are permitted. Shirts must be appropriate length and meet SUSD dress code



**Pants, Capris & Shorts** must be solid in black, khaki or navy w/ no logos, graphics writing or rips/holes. Shorts must be worn three inches above the knee or shorter. Sweat pants & joggers are not acceptable attire.



**Jumpers, Dresses, Skorts & Skirts**

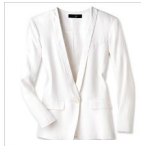
must be solid in black, khaki or navy w/ no logos, graphics or writing. All must be worn three inches above the knee or longer.



**Socks** must be solid in black, white or navy w/ no logos, graphics or writing, unless they are CRPTO issued socks.



**Jackets, Sweaters, Sweatshirts, Vests, Cover-ups & Blazers** must be solid in color w/ no logos, graphics, or writing. They may be white, black, light blue or navy.



A collared shirt that meets the uniform must still be worn under jackets, sweaters, sweatshirts, cover-ups & blazers at all times.



All **shoes** must be closed toed.



All **accessories** must be solid in color with no logos. Accessories may be black, white light blue or navy. *No accessories that are deemed distracting to the learning environment are permitted.*



**Leggings & Tights** must be solid black, white, navy or khaki w/ no logos, graphics or writing. They may be worn under skirts, dresses & jumpers only.



**Official CRS Spirit Wear tops & bottoms** are allowed to be worn on Fridays only.

**Official CRS Spirit Jackets & Accessories** are permitted everyday on campus, however hats are not permitted indoors.



**Official CRS Uniform options:**

All acceptable CRS uniform options can be purchased at [www.frenchtoast.com](http://www.frenchtoast.com) via the CRS storefront use code: QS5JAUM



The **ONLY** acceptable **plaid skirt** options are available on [frenchtoast.com](http://frenchtoast.com) on the Copper Ridge store front ONLY. Any other style of plaid skirts are unacceptable.



**\*\*All clothing must follow SUSD Dress Code.\*\***

**If you have any questions regarding the uniform please contact the CRS office directly.**