



# SUSD Bond

**Dr. Denise Birdwell, Interim Superintendent**

“Engage, Educate and Empower, Every Student Every Day”

**SCOTTSDALE UNIFIED**  
SCHOOL DISTRICT



## Fiscal Responsibility –

- Authorizing the sale of the bond amount
- Priority of the expenditures
- Hiring of Architectural and Construction Firms
- Notifying the community yearly of the expenditures
- Approval of the Design of schools
- Provide timeline of construction
- Monitoring the appropriate expenditures

# SUPERINTENDENT AND STAFF



- Bond budget balances
- Bond strategic plans
- Implementation of projects
- Selection of a bond committee for fiscal review
- Project reports and updates
- Yearly enrollment growth or decline
- Expenditures including category percentiles
- Measurable data on impact of expenditures in instructional practice

**The district superintendent and staff assure that the board receives the appropriate and accurate information for decision making as well as timely updates.**

# District Design Team



- Superintendent and/or Designee
- Architectural Firm
- School Principal
- Director M&O
- Chief Systems Officer (IT/Infrastructure)
- Director Nutritional Services
- Director of Transportation
- Chief Security Officer
- Assistant Superintendent  
(Student Academic Program and Curriculum)

- **Weekly and monthly meetings during design and construction.**
- **The Architectural firm will work with the city engineers as well as the construction firm in the design process.**

# School Community



- Architectural Firm
- Chief Financial Officer
- Principal
- Teachers (3)
- Parents (3)
- Community at Large

- **Multiple small design meetings**
- **A public presentation will be held during the Design Phase for the Community (to gather input and answer questions).**
- **Final design is presented to the Governing Board for approval.**



# 1 GPA (5 firms)



- Hunt Caraway and Orcutt Winslow
- Both groups provided visual examples and timelines to better understand the scope of work with the Design Team.
- 4 case studies were provided including one school with additional educational buildings (gym and science labs)

Existing Site



## Elementary Campus Master Planning Case Study #1



## Phase 1

- Pre-K – 5<sup>th</sup> grade Classroom Building
- New Administration
- Collaboration / Technology Space
- Library
- New Kindergarten drop off and parking
- New bus lane and faculty parking
- Develop new play areas and preliminary landscaping



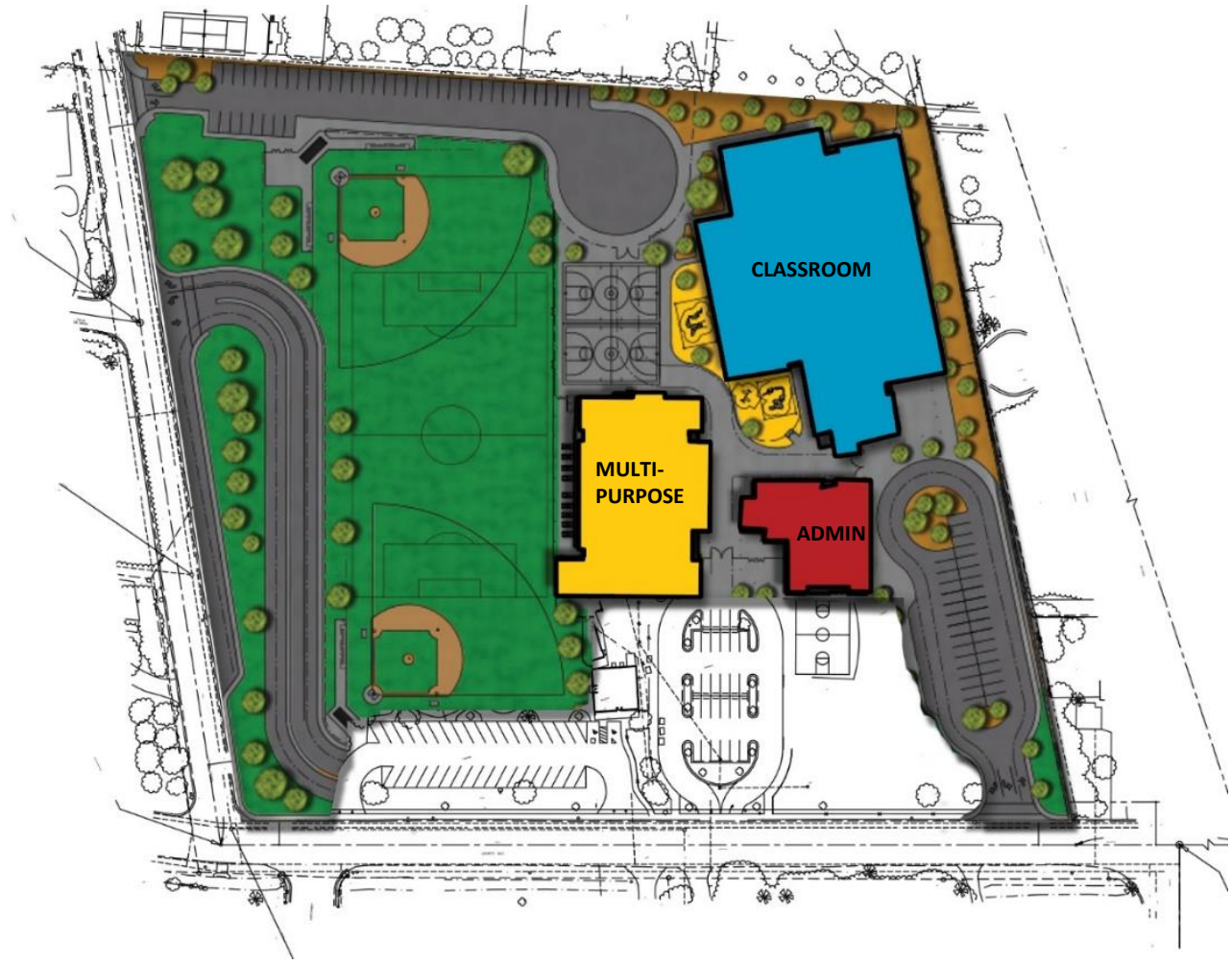
## Elementary Campus Master Planning Case Study #1





## Phase 2

- Demolish existing campus buildings; maintain existing parking lots and drives until Phase III
- Construct New Multi-purpose, Art & Music Building
- Construct new vehicle routes
- Develop play fields and landscaping
- Improve local street to accommodate area traffic



## Elementary Campus Master Planning Case Study #1



## Phase 3

- Demolish parking lots and existing drives
- Construct remainder of parking lots, drives and access lanes
- Complete landscaping



	Month 1
<b>Case Study #1</b>	
Design	Design
Review	
GMP	
Phase 1 Construction	
Phase 2 Construction	
Phase 3 Construction	

	Month 2	Month 3	Month 4	Month 5	Month 6	Month 7	Month 8	Month 9	Month 10	Month 11	Month 12	Month 13
<b>Case Study #1</b>												
Design	Design	Design	Design	Design								
Review					Review							
GMP					GMP							
Phase 1 Construction						P1	P1	P1	P1	P1	P1	P1
Phase 2 Construction												
Phase 3 Construction												

	Month 14	Month 15	Month 16	Month 17	Month 18	Month 19	Month 20	Month 21
<b>Case Study #1</b>								
Design								
Review								
GMP								
Phase 1 Construction	P1	P1	P1					
Phase 2 Construction				P2	P2	P2	P2	FINAL
Phase 3 Construction						P3	P3	

## Schedule

## Elementary Campus Master Planning Case Study #1

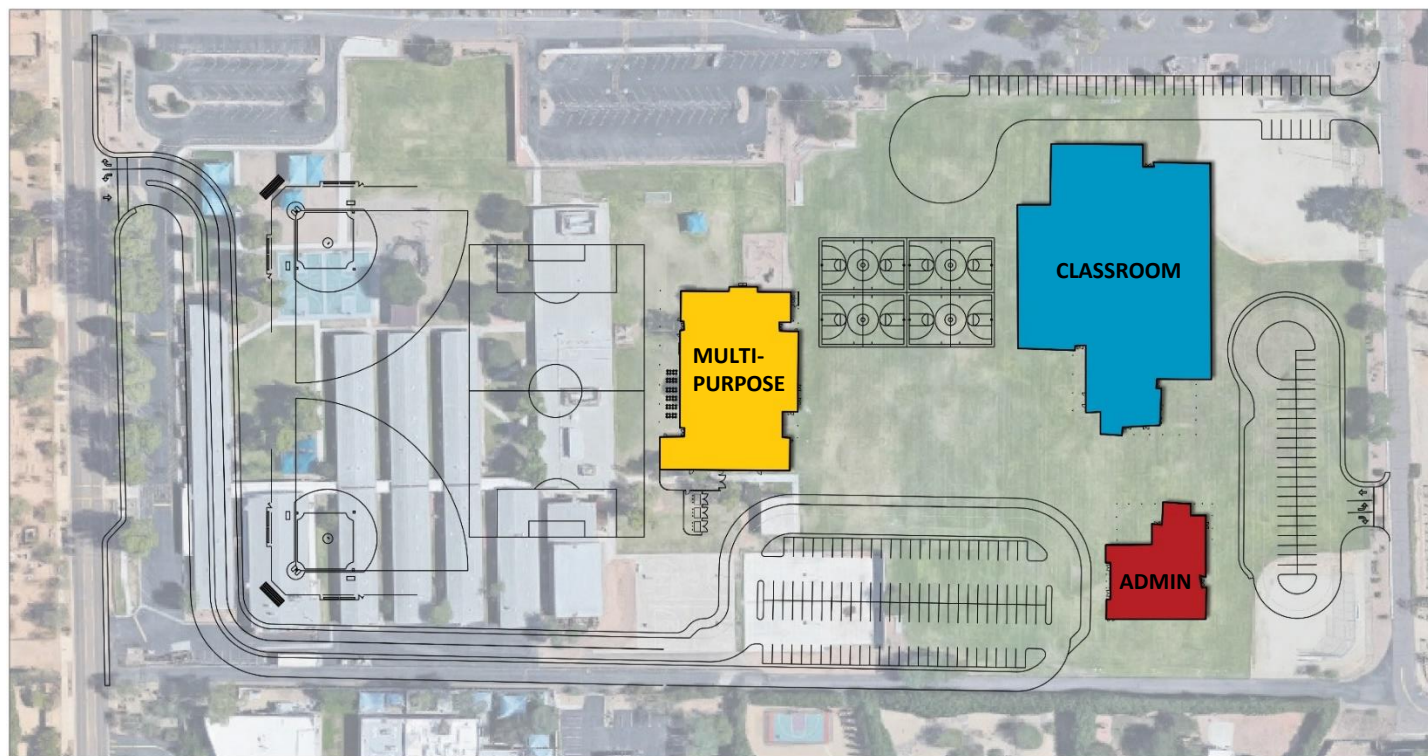




## Elementary Campus Master Planning Case Study #2







## Elementary Campus Master Planning Case Study #2



	Month 1	Month 2
<b>Case Study #2</b>		
Design	Design	Design
Review		
GMP		
Phase 1 Construction		
Phase 2 Construction		

	Month 3	Month 4	Month 5	Month 6	Month 7	Month 8	Month 9	Month 10	Month 11	Month 12	Month 13	Month 14
<b>Case Study #2</b>												
Design	Design	Design										
Review			Review									
GMP			GMP									
Phase 1 Construction				P1	P1	P1	P1	P1	P1	P1	P1	P1
Phase 2 Construction												

	Month 15	Month 16	Month 17	Month 18	Month 19	Month 20	Month 21
<b>Case Study #2</b>							
Design							
Review							
GMP							
Phase 1 Construction	P1	P1	P1				
Phase 2 Construction				P2	P2	P2	FINAL

## Schedule

## Elementary Campus Master Planning Case Study #2



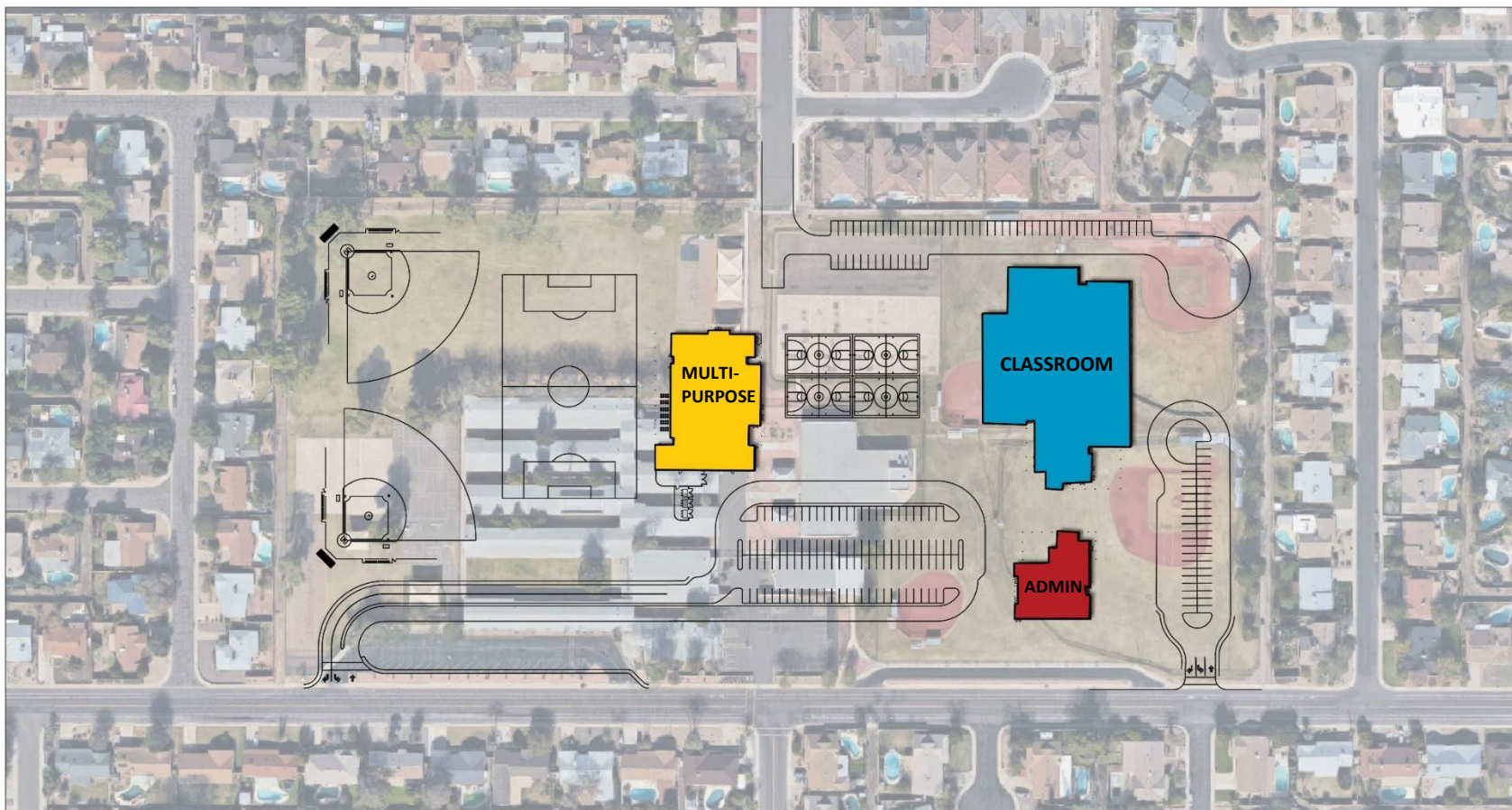




## Elementary Campus Master Planning Case Study #3







## Elementary Campus Master Planning Case Study #3





							Month 1	Month 2	Month 3	Month 4	Month 5	Month 6
<b>Case Study #3</b>												
Design							Design	Design	Design	Design		
Review											Review	
GMP											GMP	
Phase 1 Construction												P1
Phase 2 Construction												

	Month 7	Month 8	Month 9	Month 10	Month 11	Month 12	Month 13	Month 14	Month 15	Month 16	Month 17	Month 18
<b>Case Study #3</b>												
Design												
Review												
GMP												
Phase 1 Construction	P1	P1	P1	P1	P1	P1	P1	P1	P1	P1	P1	
Phase 2 Construction												P2

	Month 19	Month 20	Month 21
<b>Case Study #3</b>			
Design			
Review			
GMP			
Phase 1 Construction			
Phase 2 Construction	P2	P2	FINAL

## Schedule

## Elementary Campus Master Planning Case Study #3



**site aerial existing**

**case study #4**

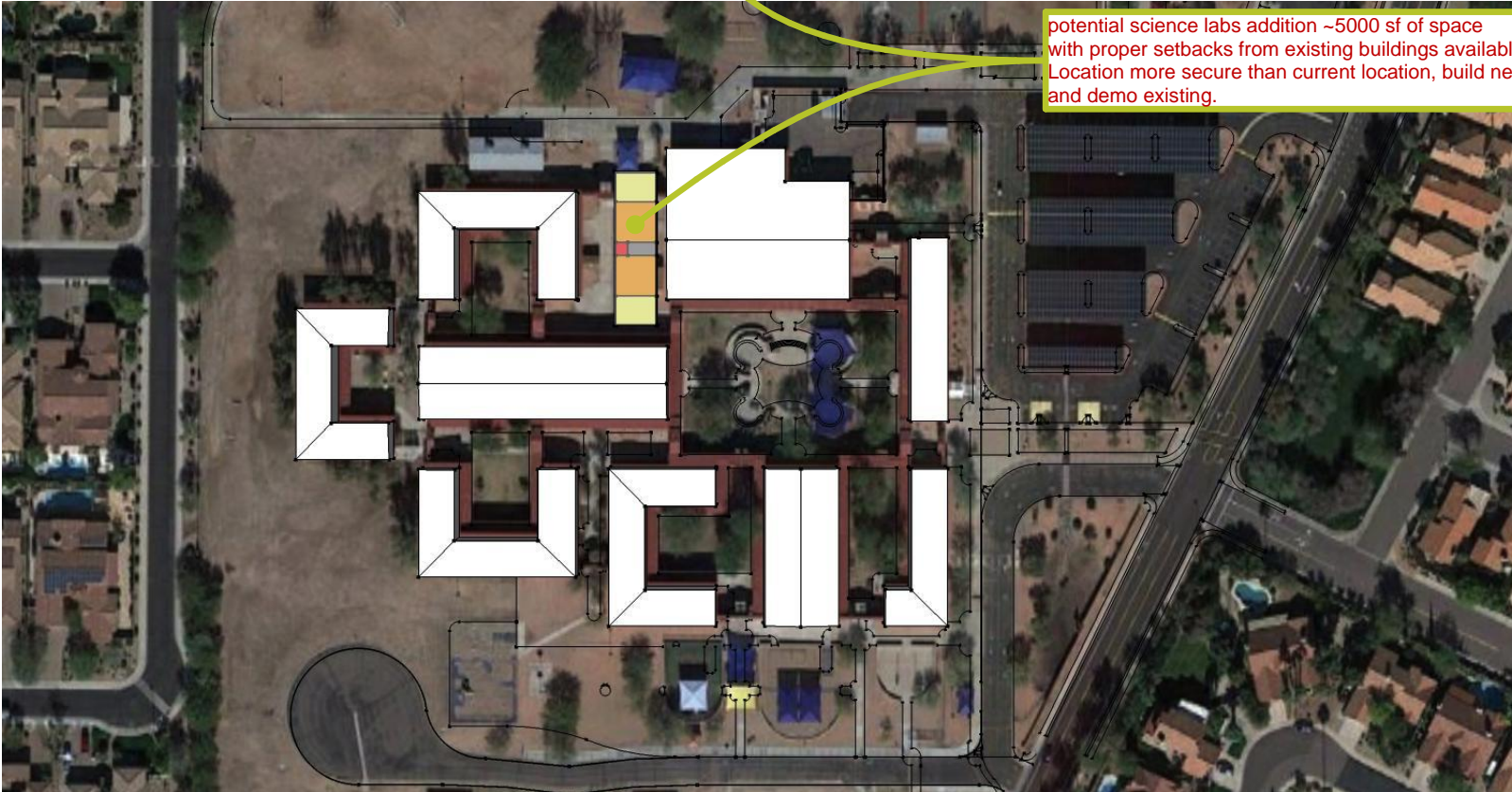
© 2016 the (hard copy or electronic) drawing is an instrument of service and the property of the Occult/Meadow Partnership and shall remain their property. The design professional shall not be responsible for any alterations, modifications or additions made to this drawing by any party other than the design professional. Use of this drawing shall be limited to the original use for which it was prepared and publication thereof is expressly limited to such uses, in whole or in part.



© 2016 Unless otherwise agreed in writing, design professional reserves all copyright or other proprietary interest in this drawing, and it may not be reused for any other purpose without the design professional's written permission. Publication in whole or in part is prohibited without the written permission of the design professional. Any information obtained or conclusions derived from this drawing shall be at the user's sole risk.



© 2016 the (hard copy or electronic) drawing is an instrument of service and the property of the Occell/Meslow Partnership and shall remain their property. The design professional shall not be responsible for any alterations, modifications or additions made to this drawing by any party other than the design professional. Use of this drawing shall be limited to the original use for which it was prepared and publication thereof is expressly limited to such use, in whole or in part.



© 2016 Unless otherwise agreed in writing, design professional reserves all copyright or other proprietary interest in this drawing, and it may not be re-used for any other purpose without the design professional's written consent. Publication by any method in whole or part is prohibited without the written permission of the design professional. Any information obtained or conclusions derived from this drawing shall be at the user's sole risk.

science labs addition

case study #4



© 2016 the (hard copy or electronic) drawing is an instrument of service and the property of the Occelli/Winslow Partnership and shall remain their property. The design professional shall not be responsible for any alterations, modifications or additions made to this drawing by any party other than the design professional. Use of this drawing shall be limited to the original use for which it was prepared and publication thereof is expressly prohibited in any form, in whole or in part.

**ALT GYM LOCATION:**

- 12,000 to 14,000 sf high school or middle school BB court
- close to school, but public access a compromise

Potential parking lot addition - 40-60 spaces possible  
Can be for Pre-K and Kinder use.

**gym addition - option-2**

**case study #4**

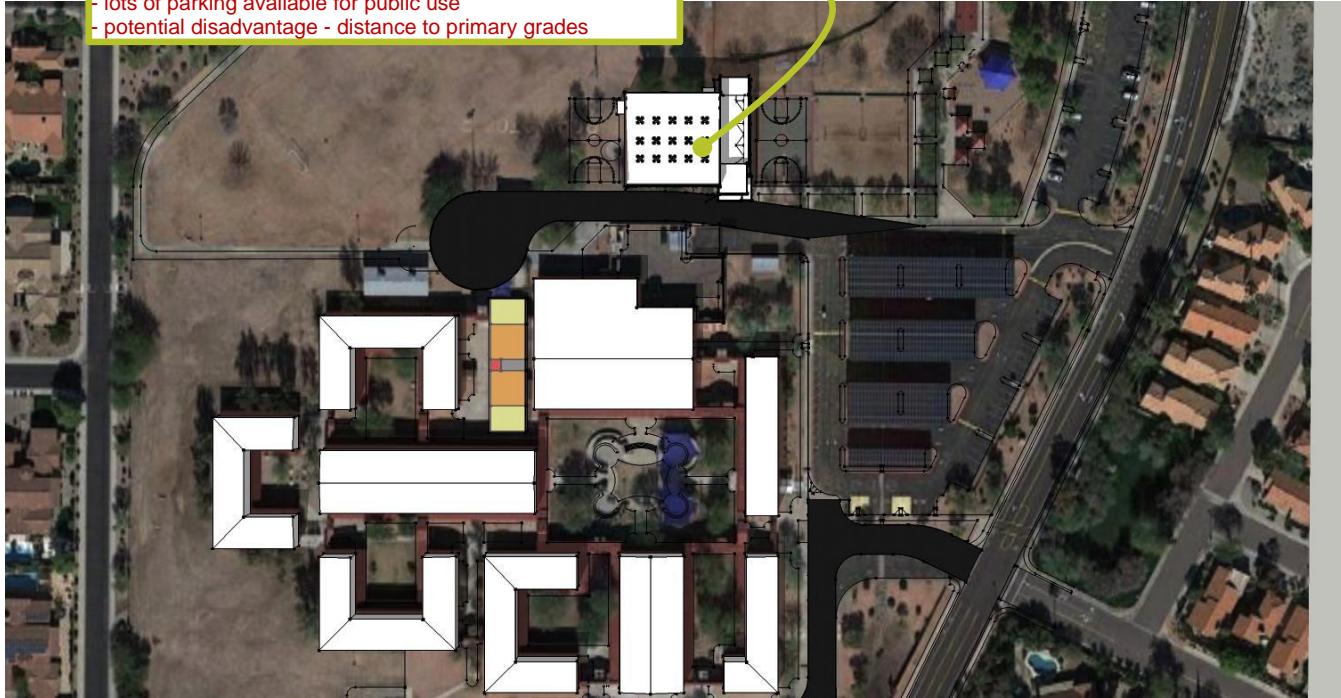
© 2016 Unless otherwise agreed in writing, design professional reserves all copyright or other proprietary interest in this drawing, and it may not be re-used for any other purpose without the design professional's written consent. Publication by any method in whole or part is prohibited without the written permission of the design professional. Any information obtained or conclusions derived from this drawing shall be at the user's sole risk.



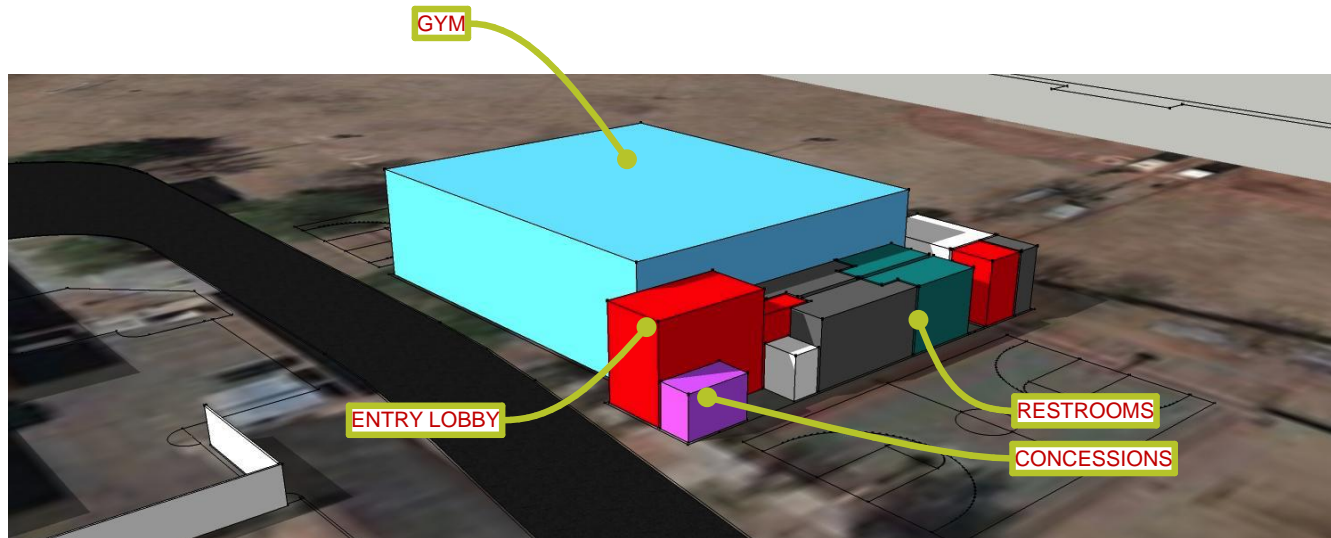


**ADD NEW GYM:**

- 12,000 to 14,000 sf high school or middle school BB court
- park adjacency leasing opportunity for full gym, or restrooms
- secure fencing for student access, public front for after hours
- lots of parking available for public use
- potential disadvantage - distance to primary grades



© 2016 the (hard copy or electronic) drawing is an instrument of service and the property of the Occelli/Winslow Partnership and shall remain their property. The design professional shall not be responsible for any alterations, modifications or additions made to this drawing by any party other than the design professional. Use of this drawing shall be limited to the original use for which it was prepared and publication thereof is expressly limited to such use, in whole or in part.



© 2016 Unless otherwise agreed in writing, design professional reserves all copyright or other proprietary interest in this drawing, and it may not be re-used for any other purpose without the design professional's written consent. Publication by any method in whole or part is prohibited without the written permission of the design professional. Any information obtained or conclusions derived from this drawing shall be at the user's sole risk.

**gym addition - option-1 detail of spaces**

**case study #4**



**ADD FIRE LANE /CUL-DE-SAC FOR PARENT DROP**

- One smooth flowing parent drop - 1500' long
- One way in, one way out - eliminated choke points
- cul-de-sac fire lane needed for code compliance and science labs



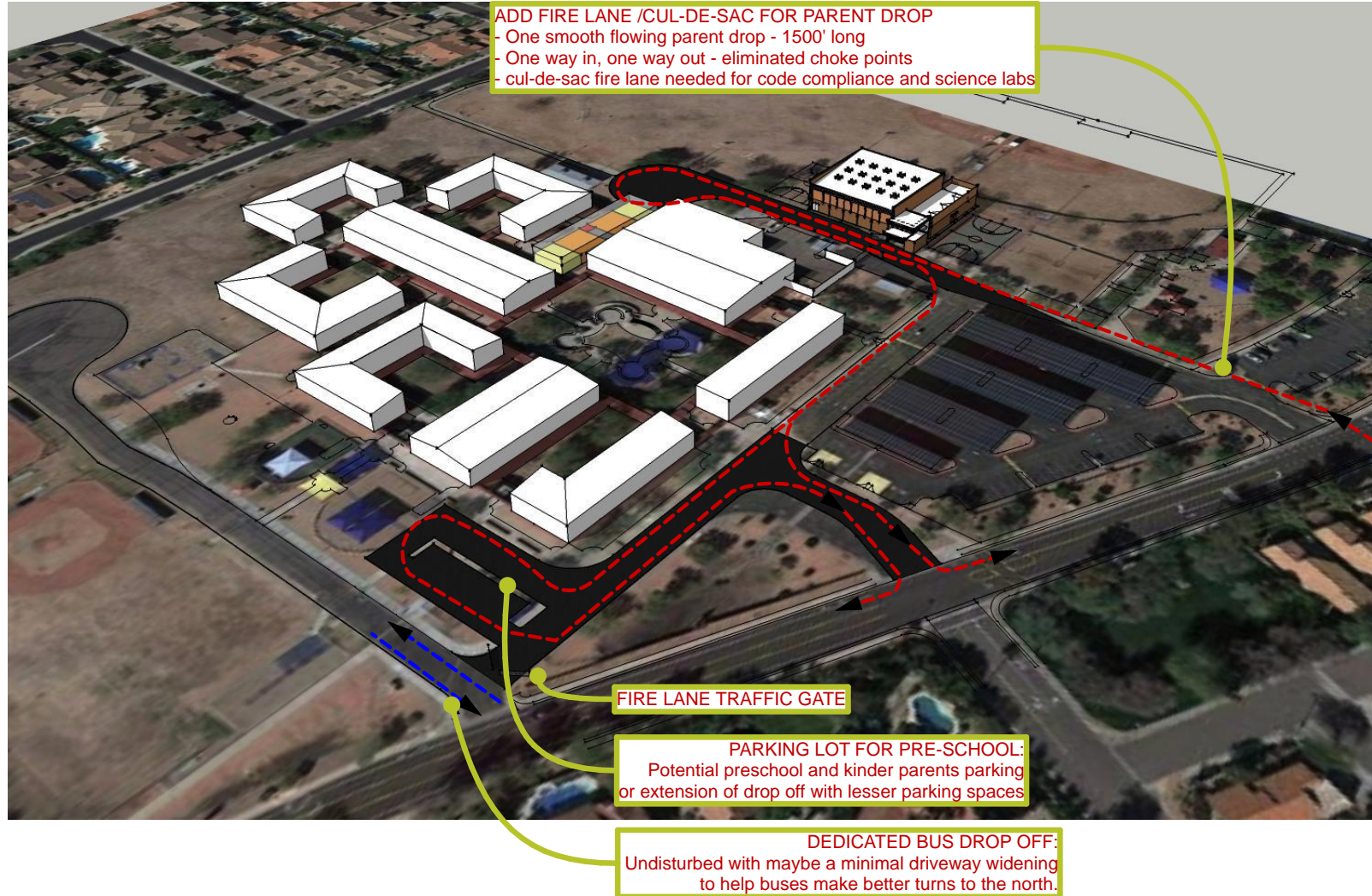
© 2018 the (hard copy or electronic) drawing is an instrument of service and the property of the Occult/Mislow Partnership and shall remain their property. The design professional shall not be responsible for any alterations, modifications or additions made to this drawing by any party other than the design professional. Use of this drawing shall be limited to the original site for which it was prepared and publication thereof is expressly limited to such use, in whole or in part.

© 2018 Unless otherwise agreed in writing, design professional reserves all copyright or other proprietary interest in this drawing, and it may not be re-used for any other purpose without the design professional's written consent. Publication by any method in whole or part is prohibited without the written permission of the design professional. Any information obtained or conclusions derived from this drawing shall be at the user's sole risk.

**parent drop - increased queing**

**case study #4**





drop off flow illustration

case study #4

© 2016 this hard copy or electronic drawing is an instrument of service and the property of the OrcuttWinslow Architects. It shall remain the property of the OrcuttWinslow Architects and shall not be responsible for any alterations, modifications or additions made to this drawing by any party other than the design professional. Use of this drawing shall be limited to the original site for which it was prepared and publication thereof is expressly limited to such use, re-use or reproduction.

susdmcheyenne1traditional3school  
orcutt1winslow2architects

	December	January	February	March	April	May	June	July	August	September	October	November	December
Design													
Regulatory Review and GMP													
Construction													

© 2016 Unless otherwise agreed in writing, design professional reserves all copyright or other proprietary interest in this drawing, and it may not be re-used for any other purpose without the design professional's written consent. Publication by any method in whole or part is prohibited without the written permission of the design professional. Any information obtained or conclusions derived from this drawing shall be at the user's sole risk.



# Next Steps

- One Rebuild design would begin immediately
  - Selection of the District Design Team
  - Selection of the School Community Design Team
  - Procurement Processes for Construction Firm
- If a second rebuild is voted on tonight the design would begin in 4 to 6 months
  - Review of enrollment data, program review, impact on other sites
  - Study the entire Granite Reef Corridor





# January Process...

- In January, we will bring case study 4 back and life cycle, safety, security items.
- Decide the summer bond projects.



# Thank you!