

---

# SCHOOL DISTRICT ENROLLMENT ANALYSIS

---



**SCOTTSDALE UNIFIED SCHOOL DISTRICT**  
**SCOTTSDALE, ARIZONA**

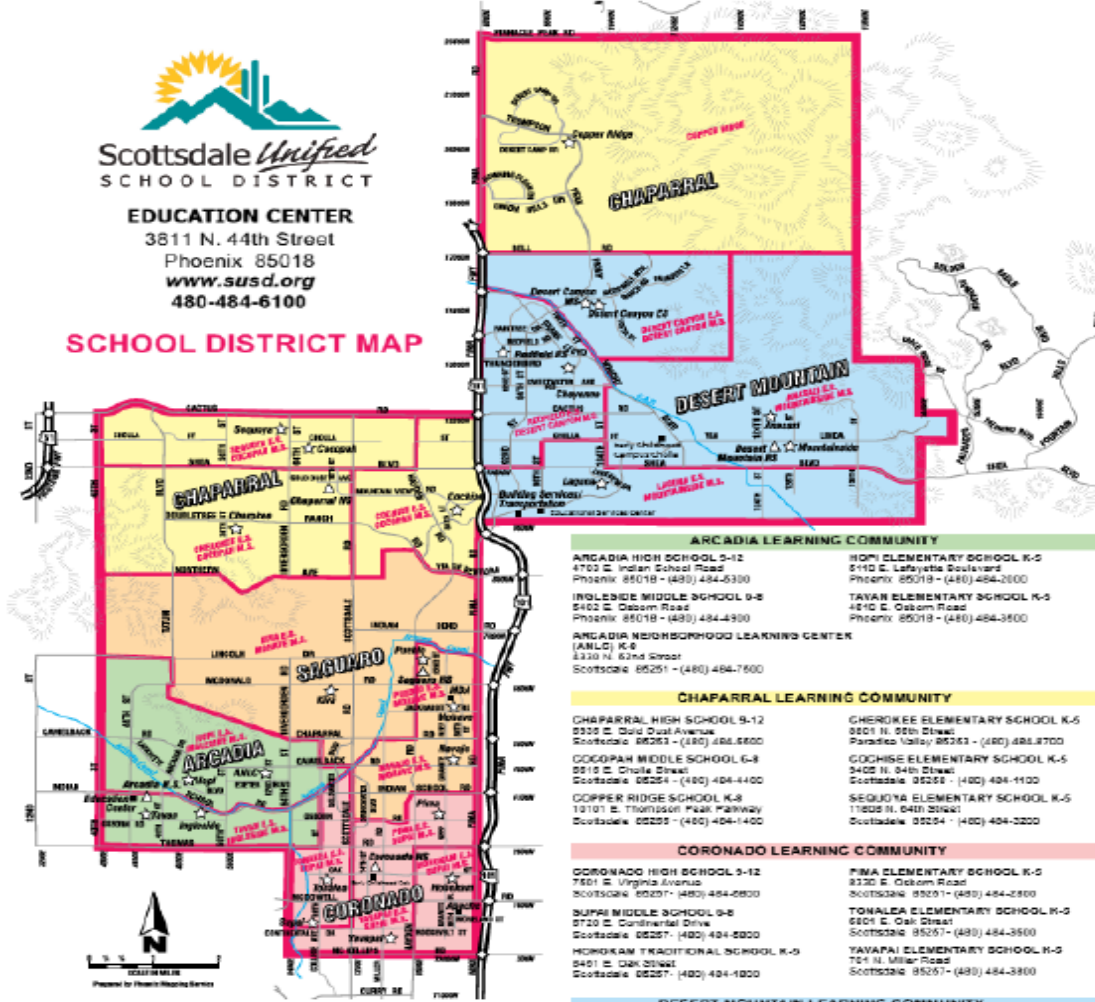
**PREPARED FOR:**  
**SCOTTSDALE UNIFIED SCHOOL DISTRICT**



**Scottsdale Unified**  
SCHOOL DISTRICT

**EDUCATION CENTER**  
3811 N. 44th Street  
Phoenix 85018  
[www.susd.org](http://www.susd.org)  
480-484-6100

**SCHOOL DISTRICT MAP**



**SAGUARO LEARNING COMMUNITY**

<b>SAGUARO HIGH SCHOOL 9-12</b> 6280 N. 92nd Street Scottsdale 85250 • (480) 484-7200	<b>NAVAJO ELEMENTARY SCHOOL K-5</b> 4520 N. Dryden Peak Road Scottsdale 85251 • (480) 484-2000
<b>MORAYNE MIDDLE SCHOOL 6-8</b> 9190 E. 125th Street Scottsdale 85250 • (480) 484-0200	<b>PUSCLO ELEMENTARY SCHOOL K-5</b> 8320 N. 83rd Street Scottsdale 85250 • (480) 484-3100
<b>KIVA ELEMENTARY SCHOOL K-5</b> 8211 E. McDonald Drive Paradise Valley 85252 • (480) 484-3200	

**ARCADIA LEARNING COMMUNITY**

<b>ARCADIA HIGH SCHOOL 9-12</b> 4700 E. Indian School Road Phoenix 85018 • (480) 484-5300	<b>101st ELEMENTARY SCHOOL K-5</b> 8110 E. Lafayette Boulevard Phoenix 85018 • (480) 484-2800
<b>INGLESIDE MIDDLE SCHOOL 6-8</b> 5402 E. Osborn Road Phoenix 85018 • (480) 484-4300	<b>TAVAN ELEMENTARY SCHOOL K-5</b> 4010 E. Osborn Road Phoenix 85018 • (480) 484-3500
<b>ARCADIA NEIGHBORHOOD LEARNING CENTER (ARLNC) K-5</b> 1310 N. 62nd Street Scottsdale 85251 • (480) 484-7600	

**CHAPARRAL LEARNING COMMUNITY**

<b>CHAPARRAL HIGH SCHOOL 9-12</b> 9305 E. Cold Dusk Avenue Scottsdale 85253 • (480) 488-5600	<b>CHEROKEE ELEMENTARY SCHOOL K-5</b> 8001 N. 95th Street Paradise Valley 85253 • (480) 481-8700
<b>COCOPAH MIDDLE SCHOOL 6-8</b> 2518 E. Cholla Drive Scottsdale 85254 • (480) 484-4400	<b>COCHISE ELEMENTARY SCHOOL K-5</b> 3402 N. 94th Street Scottsdale 85254 • (480) 484-1100
<b>COPPER RIDGE SCHOOL K-8</b> 12101 E. Thompson Peak Parkway Scottsdale 85255 • (480) 484-1400	<b>SEQUOIA ELEMENTARY SCHOOL K-5</b> 11805 N. 84th Street Scottsdale 85254 • (480) 484-3200

**CORONADO LEARNING COMMUNITY**

<b>CORONADO HIGH SCHOOL 9-12</b> 7501 E. Virginia Avenue Scottsdale 85257 • (480) 484-5800	<b>PIMA ELEMENTARY SCHOOL K-5</b> 8125 E. Osborn Road Scottsdale 85257 • (480) 484-2900
<b>SUPRA MIDDLE SCHOOL 6-8</b> 8720 E. Continental Drive Scottsdale 85257 • (480) 484-5000	<b>TONALEA ELEMENTARY SCHOOL K-5</b> 8001 E. Oak Street Scottsdale 85257 • (480) 484-3500
<b>HOROKAN TRADITIONAL SCHOOL K-5</b> 8401 E. 124th Street Scottsdale 85257 • (480) 484-1800	<b>TANAPAI ELEMENTARY SCHOOL K-5</b> 704 N. Miller Road Scottsdale 85267 • (480) 484-3800

**DESERT MOUNTAIN LEARNING COMMUNITY**

<b>DESERT MOUNTAIN HIGH SCHOOL 9-12</b> 12576 E. Via Linda Scottsdale 85255 • (480) 484-7000	<b>ANASAZI ELEMENTARY SCHOOL K-5</b> 12121 N. 124th Street Scottsdale 85255 • (480) 484-7200
<b>DESERT CANYON MIDDLE SCHOOL 6-8</b> 15205 E. McDowell Blvd. Rancho Road Scottsdale 85255 • (480) 484-4800	<b>DESERT CANYON ELEMENTARY SCHOOL K-5</b> 15225 E. McDowell Blvd. Rancho Road Scottsdale 85255 • (480) 481-1700
<b>MOUNTAINSIDE MIDDLE SCHOOL 6-8</b> 11250 N. 125th Street Scottsdale 85258 • (480) 488-5600	<b>LADUNA ELEMENTARY SCHOOL K-5</b> 10475 E. Lakeview Drive Scottsdale 85258 • (480) 484-2400
<b>CHEYENNE TRADITIONAL SCHOOL K-8</b> 13032 N. 120th Street Scottsdale 85259 • (480) 484-5000	<b>SCFIELD ELEMENTARY SCHOOL K-5</b> 5181 E. Kierland Road Scottsdale 85260 • (480) 484-4000



# Purpose of Report

The purpose of this report has been to examine enrollment potentials for the Scottsdale Unified School District over the next decade by major enrollment area.

# The report has examined:

- Historical enrollment by area by grade
- Historical population, household, and demographic data by area
- Projected population, household and demographic trends by area
- Projected the change in school aged population by area
- Projected enrollment by area and grade, assuming improvements or re-constructed schools, especially elementary schools

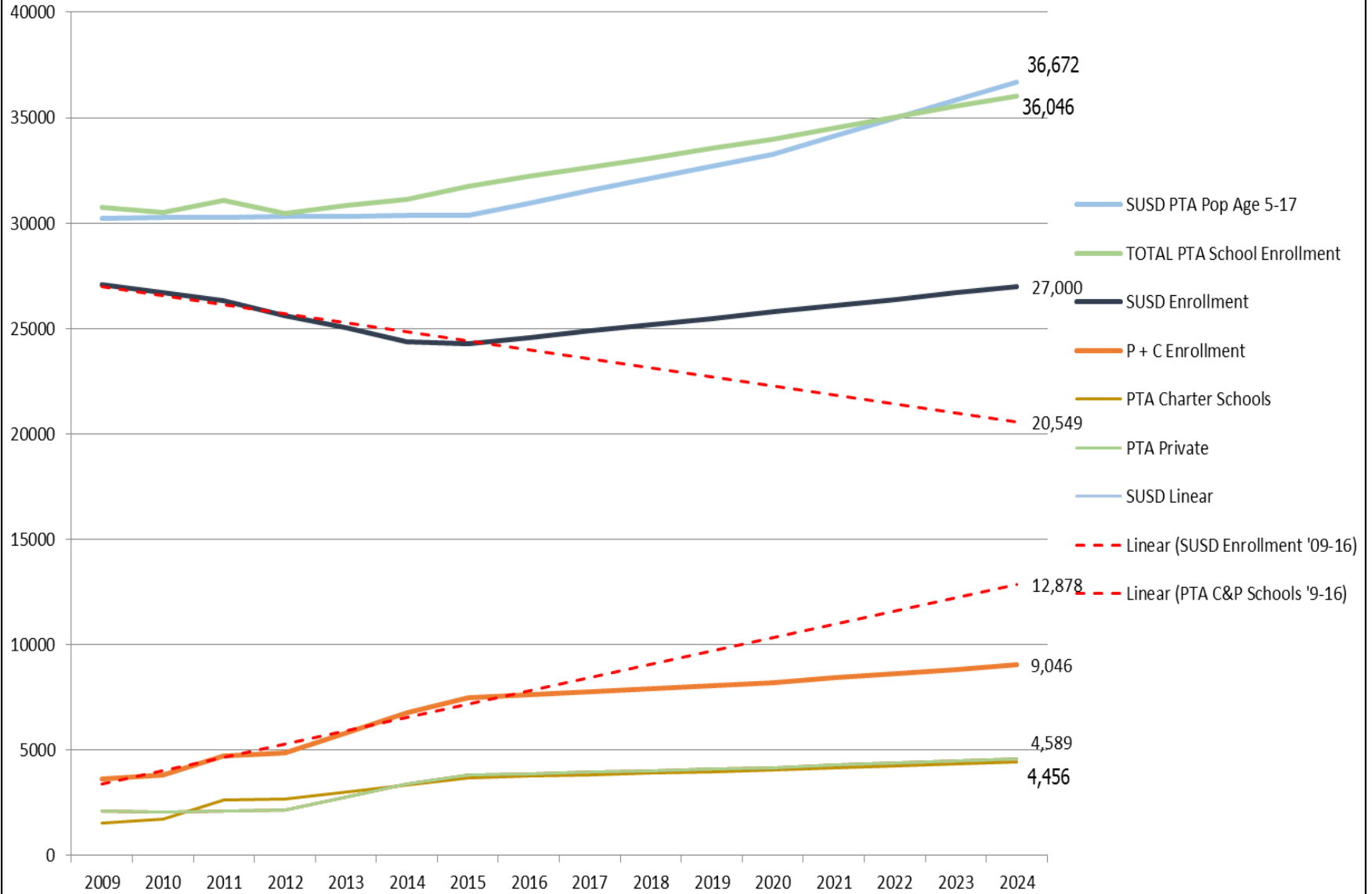
**SUSD, Charter and Private School Enrollment Comparison Including PK**

	SUSD PTA # pop	SUSD Enrollment +	SUSD Enrollment/ 5-17 *	YOY %	PTA Charter	YOY % Charter	PTA Private	YOY % Private	
<b>2015/16</b>	244,184	30,365	24,263	80%	-0.5%	3,690	11%	3,800	11%
<b>2014/15</b>	241,553	30,342	24,391	80%	-2.6%	3,339	11%	3,412	23%
<b>2013/14</b>	238,951	30,319	25,054	83%	-2.2%	3,021	12%	2,785	29%
<b>2012/13</b>	236,377	30,297	25,619	85%	-2.7%	2,697	3%	2,157	2%
<b>2011/12</b>	233,831	30,274	26,330	87%	-1.4%	2,630	51%	2,117	2%
<b>2010/11</b>	231,312	30,251	26,700	88%	-1.4%	1,742	13%	2,078	-2%
<b>2009/10</b>	228,820	30,229	27,082	90%	0.1%	1,535	13%	2,115	-2%
<b>2008/09</b>			27,059			1,355	34%	2,153	12%
<b>2007/08</b>			26,629			1,008	42%	1,919	14%
<b>2006/07</b>			26,710			708	-3%	1,684	7%
<b>2005/06</b>			26,449			732	4%	1,580	7%
<b>2004/05</b>			26,254			704	14%	1,475	24%
<b>2003/04</b>						618	88%	1,191	31%
<b>2002/03</b>						329	46%	907	6%
<b>2001/02</b>						225	43%	856	6%
<b>2000/01</b>	216,373	33,840	26,958	80%		157		805	

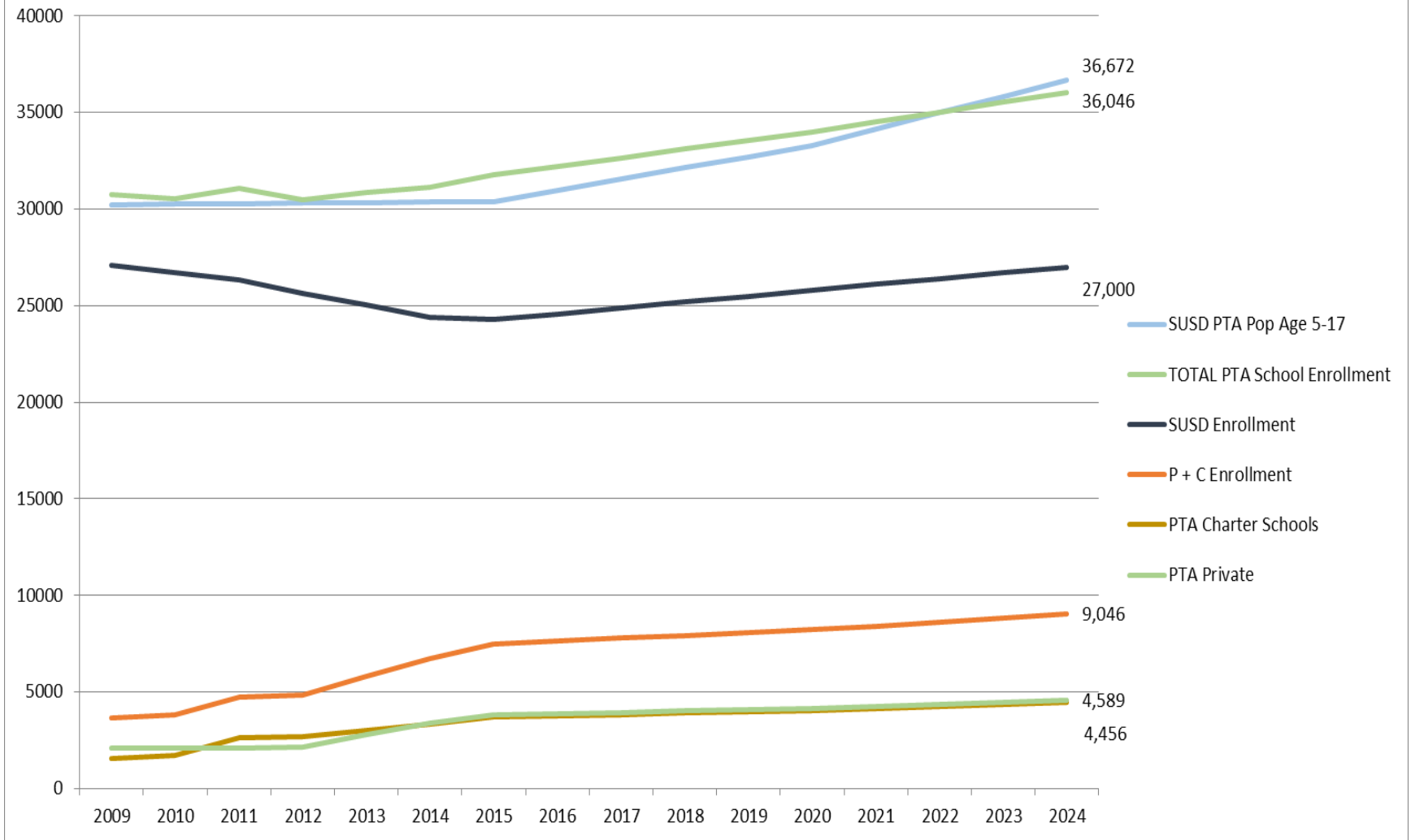
+ Enrollment includes toddler, pre-k, and k-12 due to unavailable historic data of toddler and pre-k enrollment in Charter and Private schools.

\* Based on total enrollment including assigned, in district open enrollment, and out of district open enrollment as a percent of the school aged population in the SUSD. The capture rate of SUSD students who attend their assigned schools is 49.2% of the total school aged population in the SUSD

# Enrollment Potential With Current Trends



# Projected Enrollment With Facility, Curriculum and Instructional Improvements



**Projected Enrollment Summary Excluding PK**

<b>Area</b>	<b>Capacity</b>	<b>Current Enrollment 2015/2016</b>	<b>Projected Enrollment 2024/2025</b>	<b>Annual</b>	<b>2015/16- 2024/25 Total</b>
<b>Chaparral</b>					
High School	2,692	2,065	1,531	-59	-534
K-8	2,134	1,077	1,030	-5	-47
6-8	1,176	892	1,029	15	137
K-5	2,698	1,654	2,357	78	703
<b>Desert Mountain</b>					
High School	3,327	2,225	1,683	-60	-542
K-8	950	973	1,226	28	253
6-8	3,002	1,265	1,432	19	167
K-5	3,203	2,011	2,761	83	750
<b>Saguaro</b>					
High School	1,751	1,287	1,060	-25	-227
K-8	-	-	-	-	-
6-8	1,004	788	1,046	29	258
K-5	3,380	1,355	2,335	109	980
<b>Arcadia</b>					
High School	2,009	1,709	1,407	-34	-302
K-8	655	474	555	9	81
6-8	898	743	850	12	107
K-5	1,662	1,568	1,889	36	321
<b>Coronado</b>					
High School	1,868	1,025	1,092	7	67
K-8	-	-	-	-	-
6-8	1,078	645	929	32	284
K-5	2,947	1,676	2,787	123	1,111
<b>Total</b>	<b>36,433</b>	<b>23,432</b>	<b>27,000</b>	<b>396</b>	<b>3,568</b>

**Source: SUSD, THK Associates Inc.**



---

---

### Projected PK Enrollment Summary

---

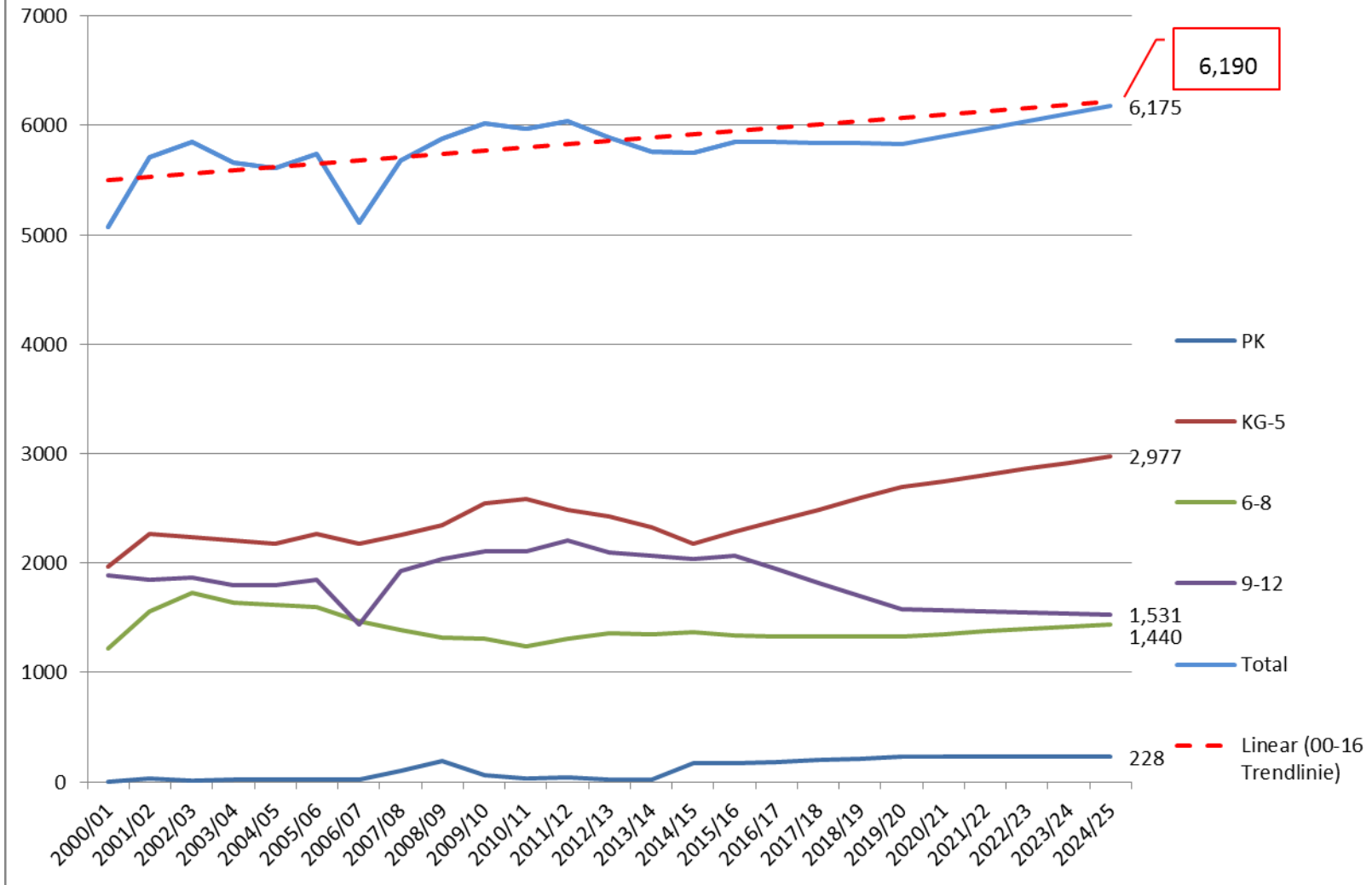
---

Area	Current Enrollment 2015/2016	Projected Enrollment 2024/2025	Annual	2015/16- 2024/25 Total
Chaparral	194	252	6	58
Desert Mountain	214	349	15	135
Saguaro	149	207	6	58
Arcadia	79	77	0	-2
Coronado	197	302	12	105
<b>Total</b>	<b>833</b>	<b>1,187</b>	<b>39</b>	<b>354</b>

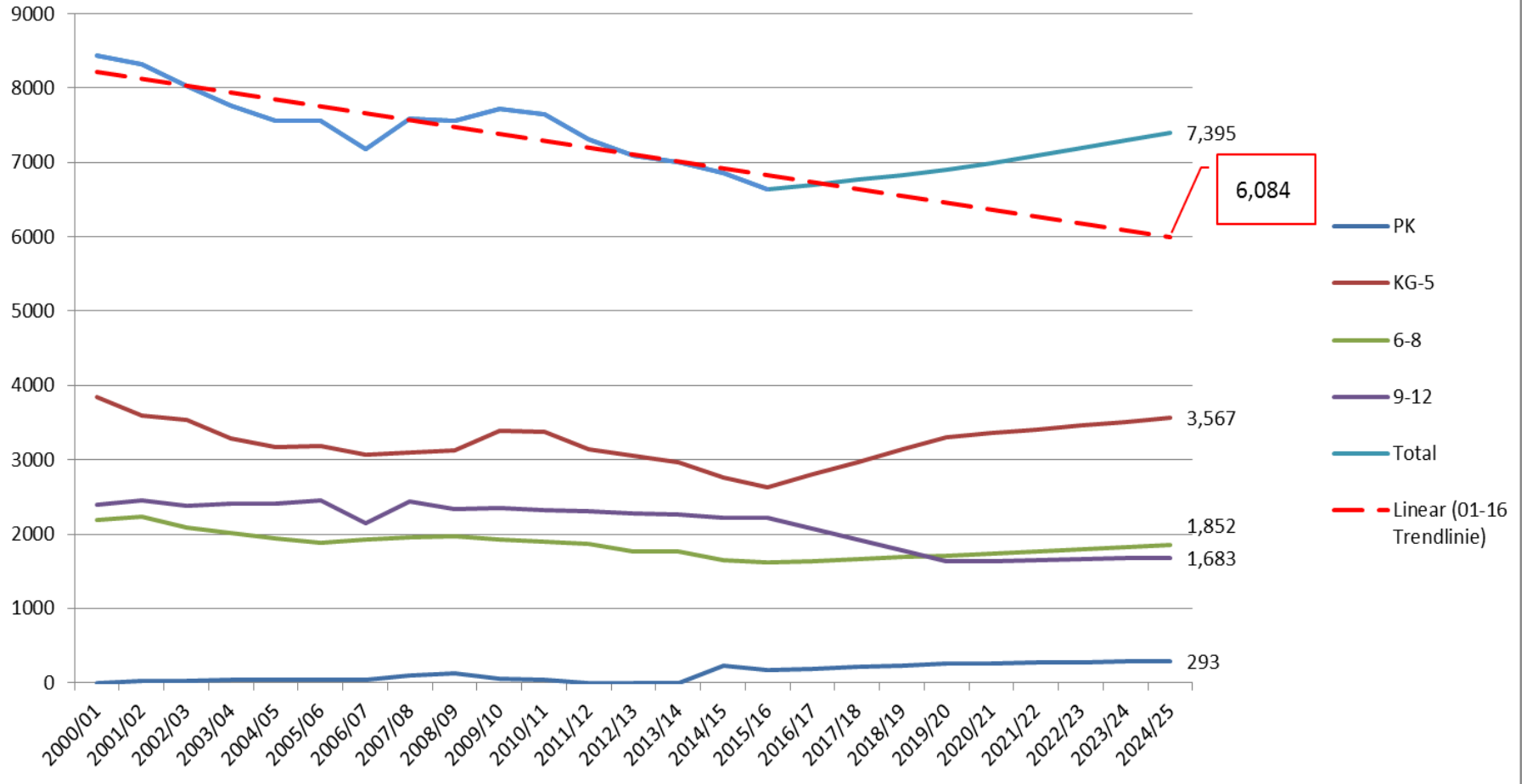
**Source: SUSD, THK Associates Inc.**

---

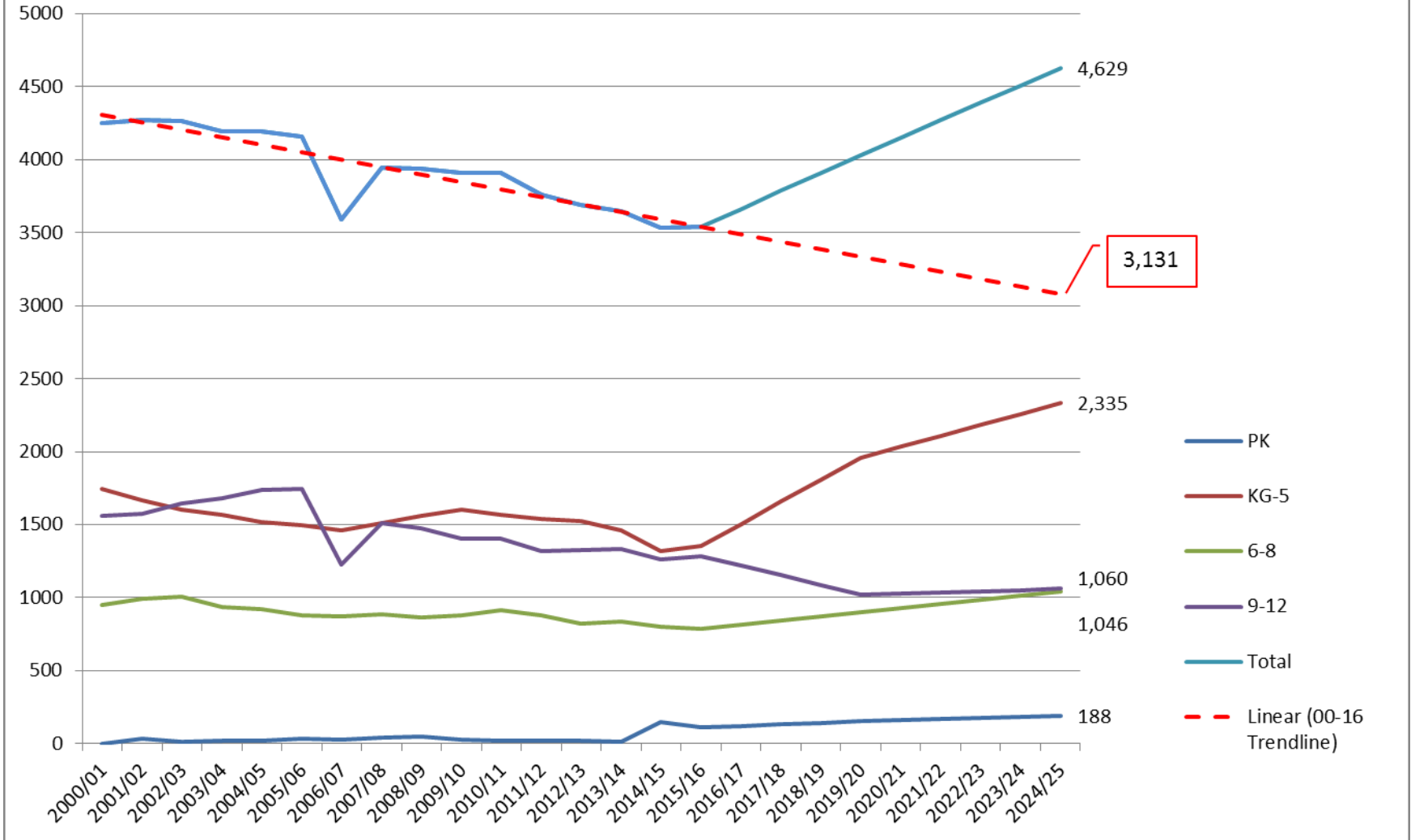
# Chaparral HS PTA Historic and Projected Enrollment, 2000-2025



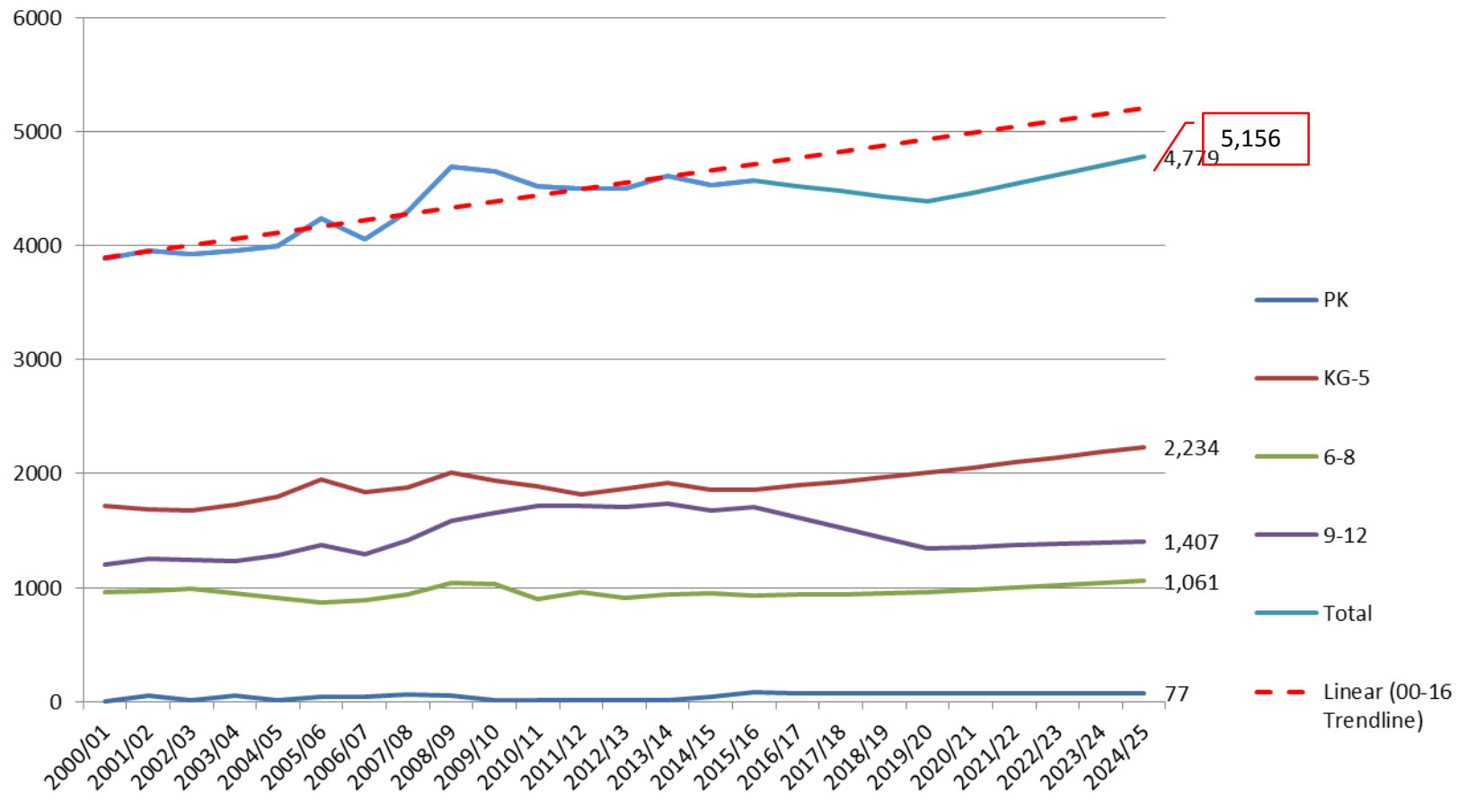
## Desert Mountain HS PTA Historic and Projected Enrollment, 2000-2025



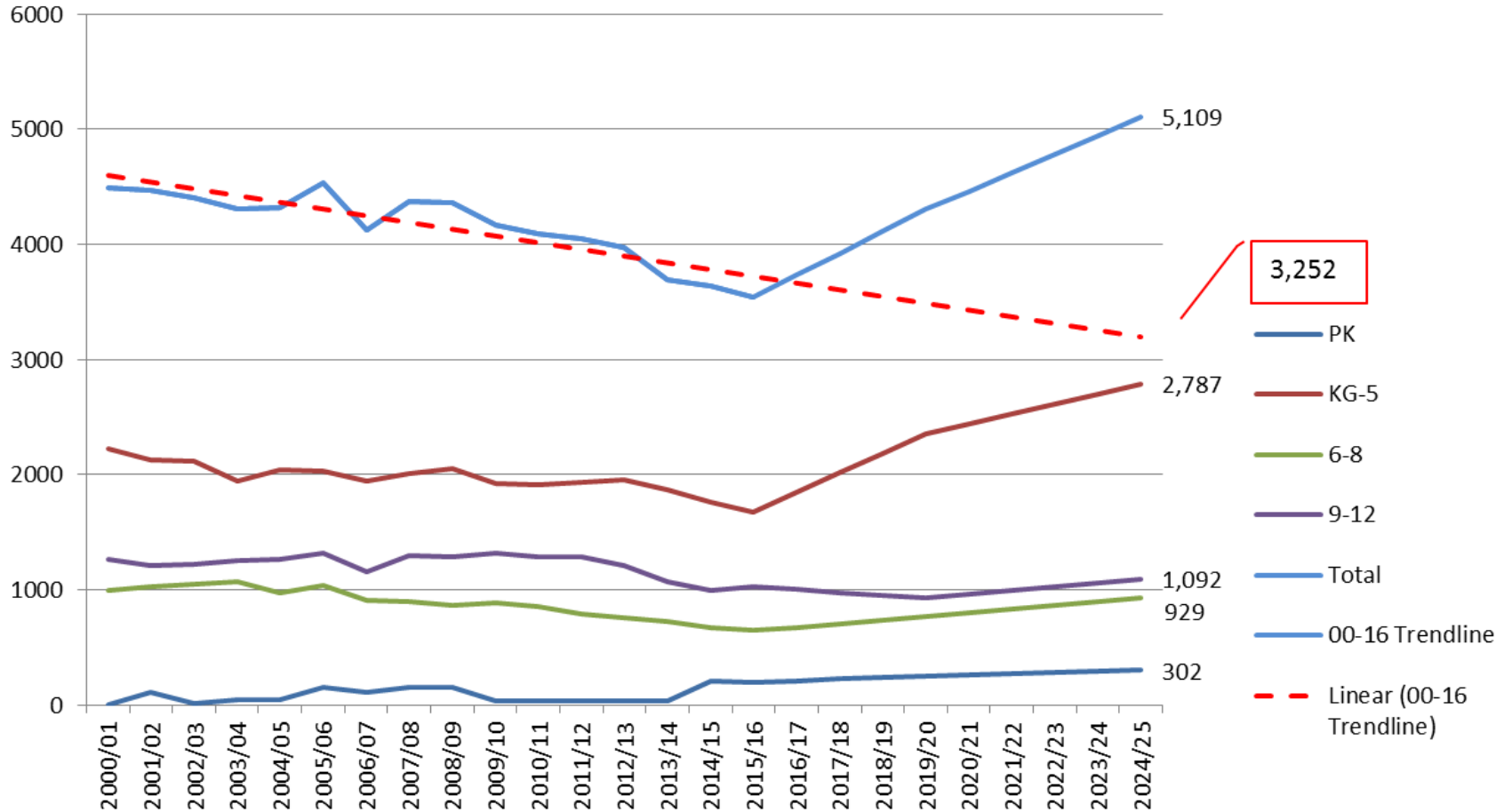
## Saguaro HS PTA Historic and Projected Enrollment, 2000-2025



## Arcadia HS PTA Historic and Projected Enrollment, 2000-2025



## Coronado HS PTA Historic and Projected Enrollment, 2000-2025





**2953 SOUTH PEORIA STREET, SUITE 101**  
**AURORA, COLORADO 80014**  
**(303) 770-7201 PHONE**  
**(303) 770-7132 FAX**  
**INFO@THKASSOC.COM**

Economic & Market Research / Land & Development Planning  
Landscape Architecture / Community Planning & Design  
Golf Feasibility Analysis