



International Baccalaureate Middle Years Program

SUSD Governing Board Work Study
November 17, 2016

Dr. Mitch von Gnechten, Executive Director of Secondary Schools

Terri Kellen, Principal, Mountainside Middle School

Nikki Wilfert, Principal, Desert Mountain High School



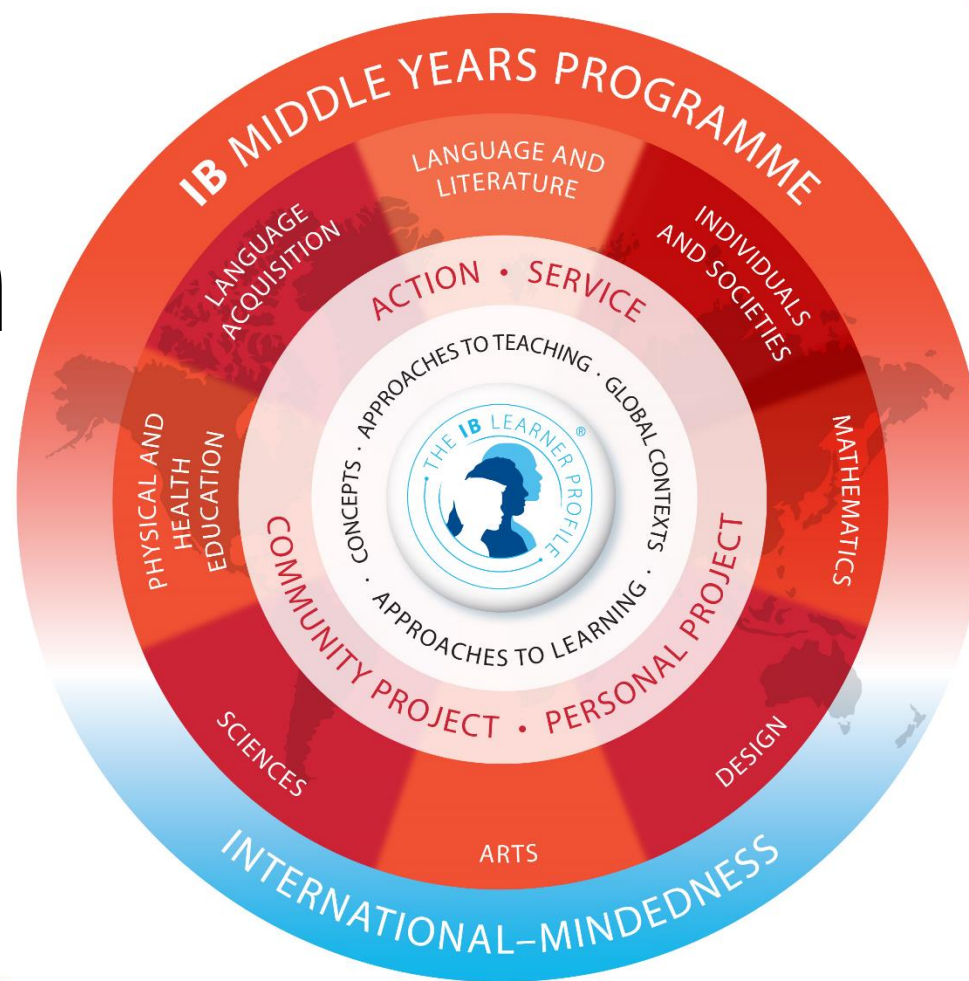
Middle Years Philosophy

The IB MYP exposes students to as many different subjects, skills, and experiences as possible so that students will learn to see knowledge as an interrelated whole. It is essential that the curriculum reflects and is responsive to the different perspectives of all our students. It should guide them in forming their own, international, outlook. The curriculum seeks to shift the emphasis from teacher-led instruction to student-led learning wherever possible. A focus on higher-order thinking skills gives students opportunities to develop a growing awareness of themselves and others as they explore real-world issues.

Source: International Baccalaureate



Curriculum Model



8 Curriculum Groups

Source: International Baccalaureate



Distinguishing Features of IB MYP

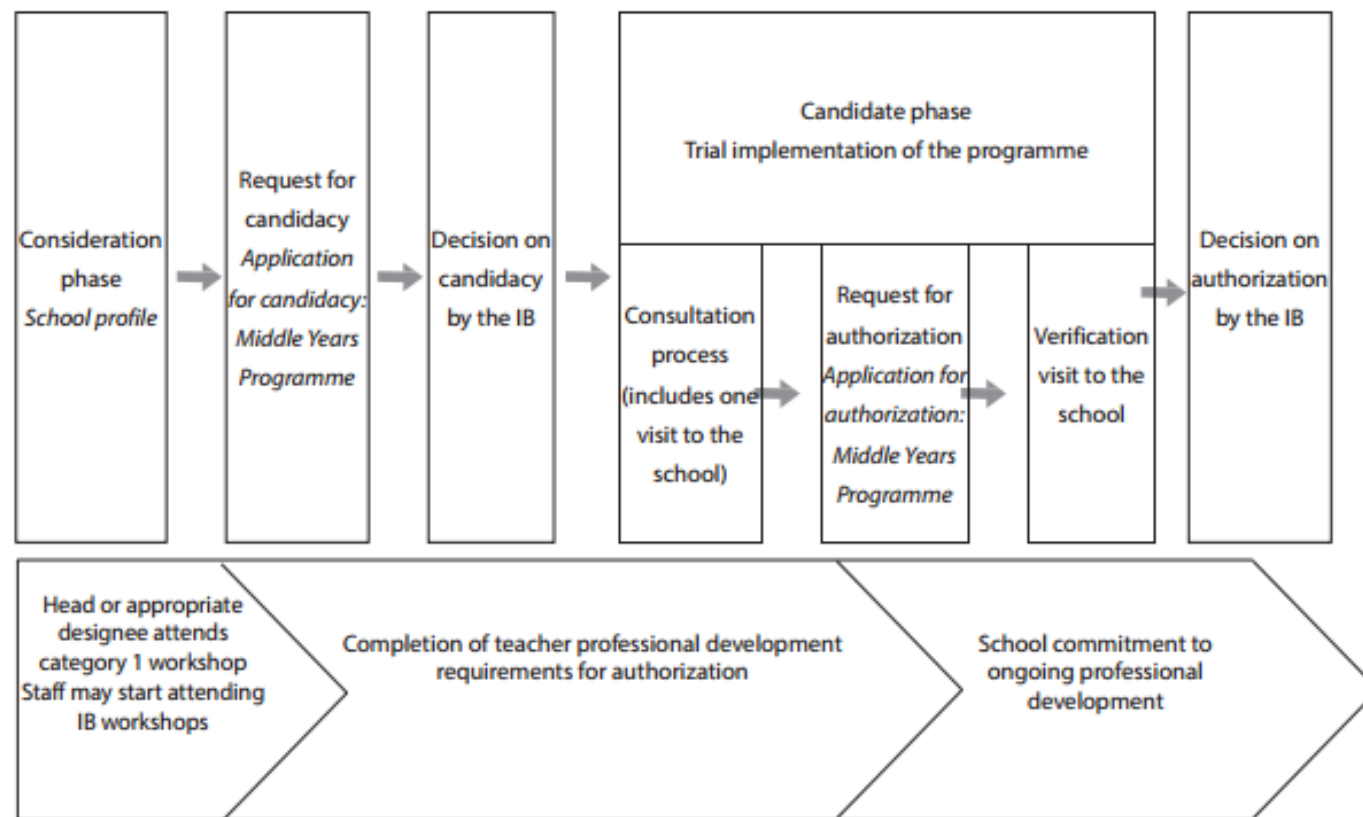
Teaching and Learning:

- 8 Curricular areas with Language Acquisition and Design being unique to the IB MYP
- Integration of service and interdisciplinary units is prevalent
- A Personal Project is the culminating project of IB MYP at the end of the Sophomore year

Source: International Baccalaureate



Authorization Process



Source: International Baccalaureate



Authorization Timeline

2016-17

- Leadership Training – “Heads of School Training”
- Feasibility Study
- Application for Candidacy



Authorization Timeline

2017-18

- Teacher Training – “Implementing the MYP Curriculum”
- MYP Coordinators Identified at High School and Middle School
- Recommended Changes to MSPG and HSPG
- Community Education and Promotion



Authorization Timeline

2018-19

- Candidate School - Academic Year in Length
- Continued Teacher Professional Development
- IB Consultation
- Request for Authorization
- Verification Visit



Authorization Timeline

2019-20

- Authorized IB MYP Schools
- Continued Teacher Professional Development
- Plan for Program Maintenance and Sustainability



Budget Projections

2016-17

- Application Candidacy Fee \$4,000
- Training – “Heads of School Training” (\$739/person + Travel/Lodgings for 5) \$10,000
\$14,000



Budget Projections

2017-18

• Annual Candidacy Fee	\$10,450
• Training – “Implementing the MYP Curriculum” (Sixteen Teachers – same costs)	\$32,000
• Substitutes	\$4,000
• MYP Middle School Coordinator 0.4 FTE Release Time	\$20,000
• MYP High School Coordinator 0.4 FTE Release Time	<u>\$20,000</u>
	\$86,450



Budget Projections

2018-19

• Annual Candidacy Fee	\$10,450
• Verification Visit Fee	\$4,070
• Training – Continued for High and Middle School Teachers	\$20,000
• Substitutes	\$4,000
• MYP Coordinators (Middle and High) 0.4 FTE Release Time	\$40,000
• Curriculum Unit Warehouse	\$3,000
• Additional Staffing	\$120,000
• Supply Budgets	<u>\$4,000</u>
	\$205,520



Budget Projections

2019-2020

• Annual IB MYP Fee	\$10,450
• Training – Continued for High and Middle School Teachers	\$20,000
• Substitutes	\$4,000
• MYP Coordinators (Middle and High) 0.4 FTE Release Time	\$40,000
• Curriculum Unit Warehouse	\$3,000
• Additional Staffing	\$120,000
• Supply Budgets	\$4,000
• Personal Project Advisor Stipends	<u>\$50,000</u>
	\$251,450

4 Year Commitment to Full IB MYP Implementation \$557,420



Budget Summary

Item	2016-17	2017-18	2018-19	2019-20
Leadership Training ¹	\$10,000			
Application Candidacy Fee	\$4,000			
Annual Candidacy Fee (Includes both schools)		\$10,450	\$10,450	
Teacher Training (Initial) ²		\$32,000		
Teacher Training (On going) ³			\$20,000	\$20,000
Substitutes ⁴		\$4,000	\$4,000	\$4,000
MYP Middle and High School Coordinator (0.4 FTE Each)		\$40,000	\$40,000	\$40,000
Verification Visit (Includes both schools)			\$4,070	
Curriculum Unit Warehouse			\$3,000	\$3,000
Annual IB MYP Fee (Includes both schools)				\$10,450
Additional Staffing Middle School ⁵			\$70,000	\$70,000
Additional Staffing High School ⁶			\$50,000	\$50,000
Personal Project Advisor Stipend ⁷				\$50,000
Supply Budget (Includes both schools)			\$4,000	\$4,000
Annual Total	\$14,000	\$86,450	\$205,520	\$251,450
			Grand Total	\$557,420

¹Registration/travel/lodging for five attendees

²Registration/travel/lodging for sixteen attendees (one teacher for each of the eight curricular areas per school)

³Registration/travel/lodging for ten attendees (five teachers per school)

⁴Twenty substitutes per school for training and on-site training

⁵Potential 1.4 FTE to support World Languages at the Middle School

⁶Potential 1.0 FTE to support World Languages and Design Course at the High School

⁷Stipend of \$100 per student – approximately five-hundred students



Challenges

- Middle and High School Master Scheduling
- Articulation of Middle and High School Schedules
- Review of Instructional Minutes at Middle School
- Additional Staffing Needs
- Movement of Staffing from DMHS to MSMS – World Languages
- Recruitment of Highly Qualified World Language Teachers
- Impact to Elective Programs
- Transfer Language in Regard to IB Trained Teachers
- Transition from Pre Diploma Program to IB MYP at DMHS



Next Steps

- Governing Board Approval and Endorsement
- Leadership Training
- Feasibility Study
- Education of Community and Staff
- Application
- Establish Budget



Thank You

Questions?